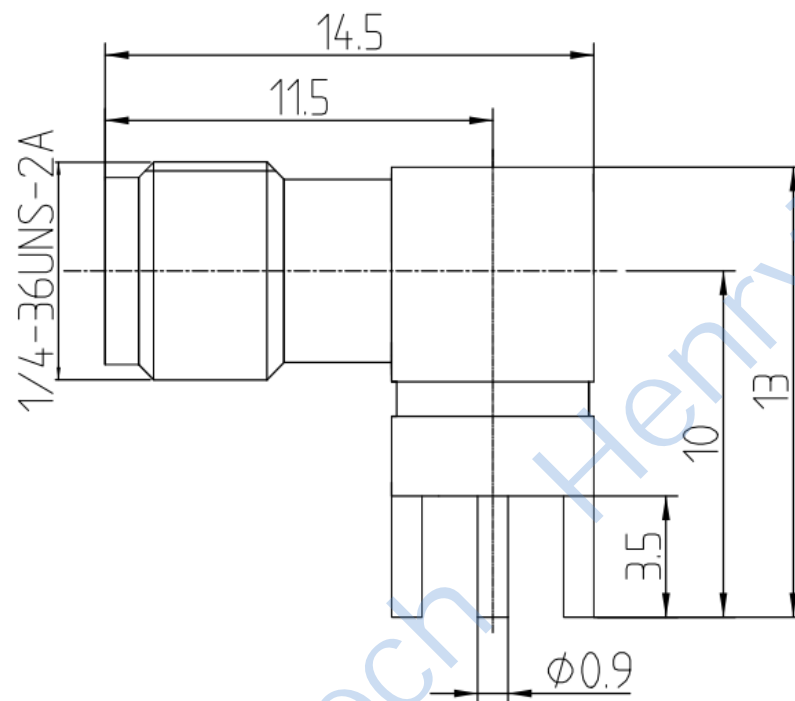
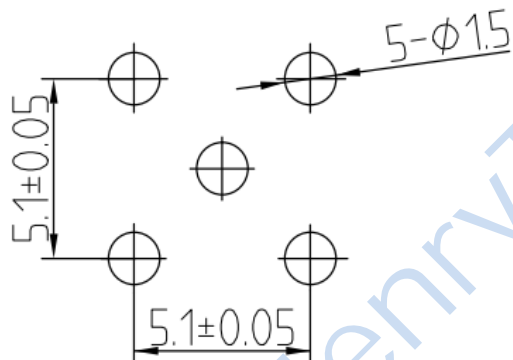


This document contains proprietary information and such information may not be disclosed to others for any purposes,  
not used for sales/marketing/procurement purposes without written permission

## Mounting Hole



### 1 Electrical Data

- 1.1 Impedance: 50 Ω
- 1.2 Frequency Range: 0-6GHz
- 1.3 VSWR: 1.20:1

### 2 Material&Finish

- 2.1 Inner Contact: gold plated over Bronze.
- 2.2 Outer Contact: gold plated over brass.
- 2.3 Insulators: Teflon

#### Notes:

- 1. ALL SPECIFICATIONS ARE SUBJECT TO CHANGE NOTICE AT ANY TIME
- 2. CUSTOMER OUTLINE DRAWING FOR REFERENCE ONLY

DRAWN: H.wei 24/12/15
ENGINEER: L.yu 24/12/15
APPROVED: W.yi 24/12/15
TOLERANCES UNLESS OTHERWISE SPECIFIED
X ±0.50
.X ±0.20
.XX ±0.10
ANGLES ±1°

TITLE:
RF Coaxial Connector
SMA Female RA Conn. PCB
PART NO: HL-SMA-KWHD2B



DIMENSION IN MILLIMETERS (mm)

SIZE: A4	SCALE: N/A	SHEET: 1/1	REV: A
----------	------------	------------	--------