

This document contains proprietary information and such information may not be disclosed to others for any purposes,
not used for sales/marketing/procurement purposes without written permission

REV	DESCRIPTION OF REVISION	ECN NO.	BY	DATE	APPROVED
A	Initial Release	—	H.wei	26/8/16	26/8/16

1 Electrical data

1.1 Impedance: $50\ \Omega$

1.2 Frequency: DC-6GHz

1.3 VSWR 1.2:1

2 Mechanical data

2.1 Temperature range $-55^{\circ}\text{C} \sim +165^{\circ}\text{C}$

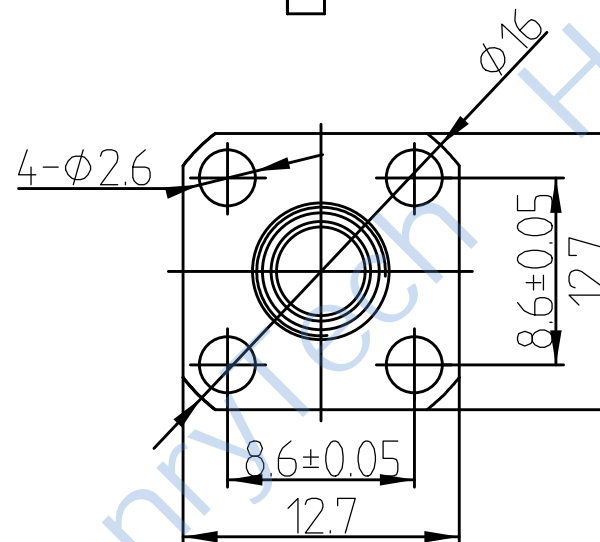
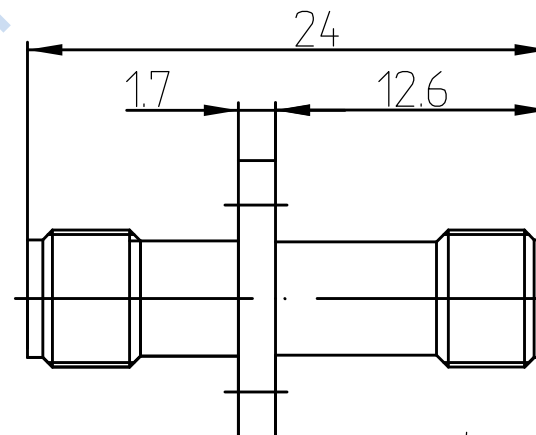
2.2 Durability(matings) >500

3 Material&Finish

3.1 Pin contact: Beryllium-copper, gold plated

3.2 Body: Brass,gold plated

3.3 Insulators: PTFE



Notes:

1. ALL SPECIFICATIONS ARE SUBJECT TO CHANGE NOTICE AT ANY TIME

2. CUSTOMER OUTLINE DRAWING FOR REFERENCE ONLY

DRAWN : H.wei 26/8/16
ENGINEER: L. yu 26/8/16
APPROVED : W. yi 26/8/16
TOLERANCES UNLESS OTHERWISE SPECIFIED X ± 0.50 .X ± 0.20 .XX ± 0.10 ANGLES $\pm 1^{\circ}$

TITLE:
SMA-KFK
SMA Female to Female Flange Adaptor

PART NO: HL-SMA-KFK-6G



DIMENSION IN MILLIMETERS (mm)

SIZE: A4 SCALE: N/A SHEET: 1/1 REV: A