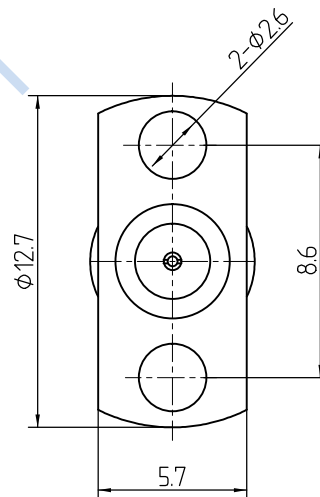
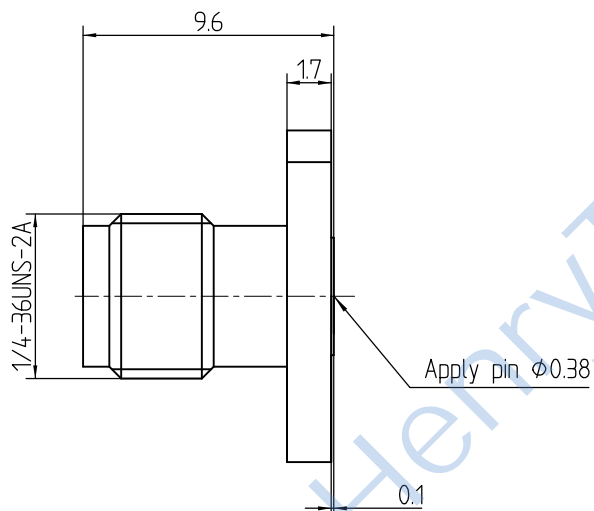
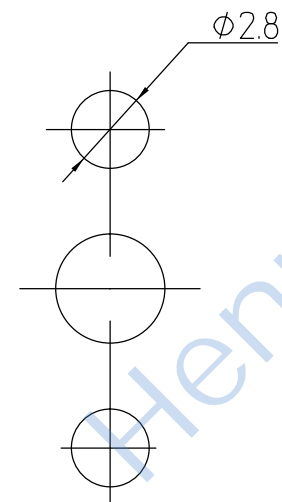


This document contains proprietary information and such information may not be disclosed to others for any purposes,
not used for sales/marketing/procurement purposes without written permission

REV	DESCRIPTION OF REVISION	ECN NO.	BY	DATE	APPROVED
A	Initial Release	—	H.wei	19/03/17	19/03/17



Recommended
Mounting Hole



1 Electrical

- 1.1 Impedance 50 Ω
1.2 Frequency DC~18GHz
1.3 VSWR 1.20 : 1

2 Environmental&Mechanical



- 2.1 Temperature range -45℃~85℃
2.2 RoHs Compliant
2.3 Durability >500 cycles

3 Materials&plating

- 3.1 Body: Brass, Gold plated
3.2 Insulator: Teflon
3.3 Contact Pin: Beryllium-copper, Gold plated

Notes:

1. ALL SPECIFICATIONS ARE SUBJECT TO CHANGE NOTICE AT ANY TIME
2. CUSTOMER OUTLINE DRAWING FOR REFERENCE ONLY

DRAWN: H.wei 19/03/17	TITLE: RF Coaxial Connector SMA Female Flange Conn. Terminal				
ENGINEER: L.yu 19/03/17					
APPROVED: W.yi 19/03/17		 DIMENSION IN MILLIMETERS (mm)			
TOLERANCES UNLESS OTHERWISE SPECIFIED X ±0.50 .X ±0.20 .XX ±0.10 ANGLES ±1°	PART NO: HL-SMA-KFD0.38	SIZE: A4	SCALE: N/A	SHEET: 1/1	REV: A